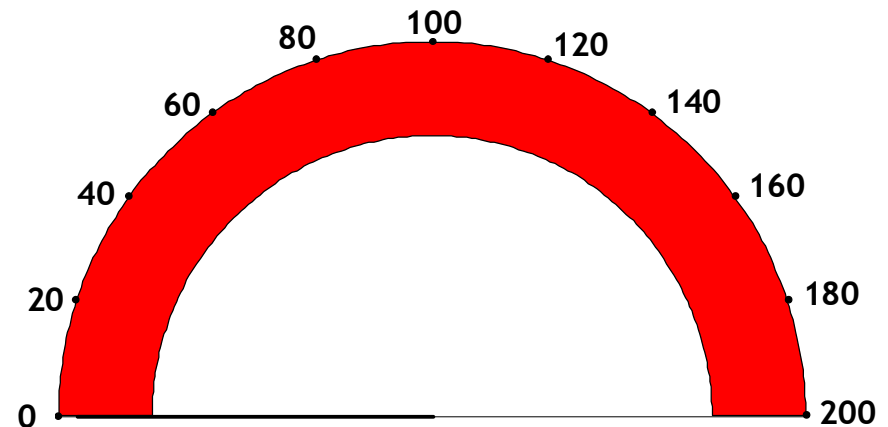
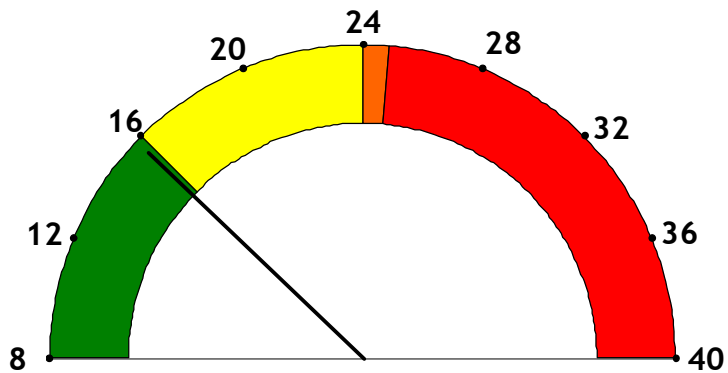
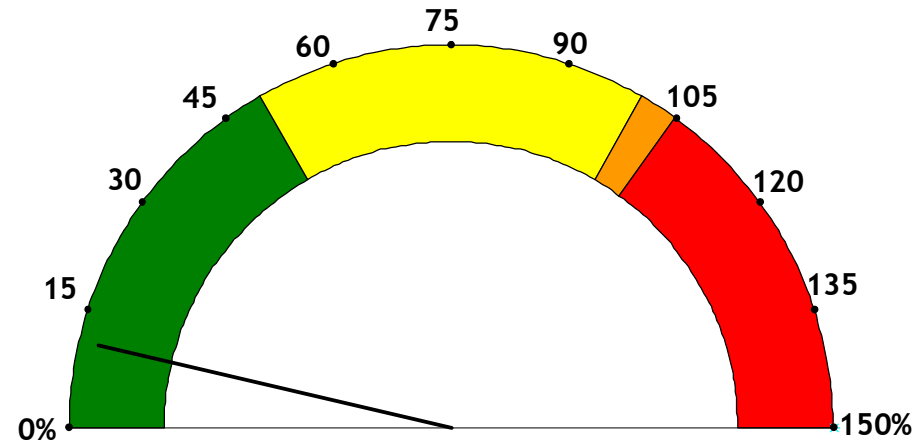
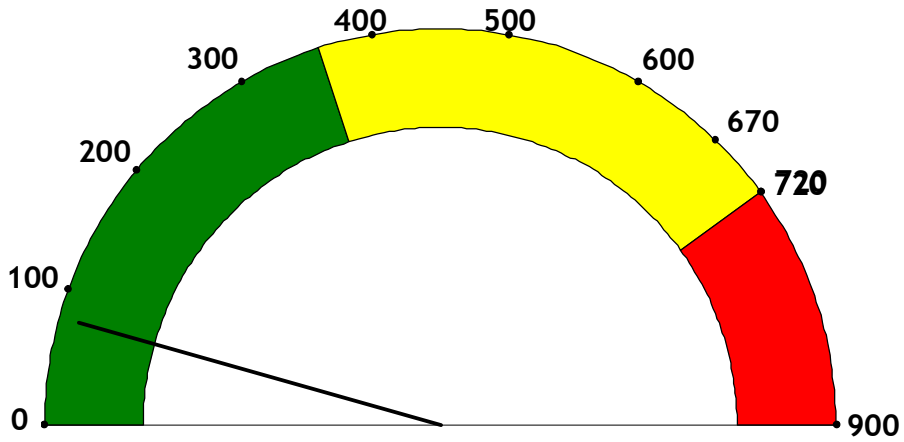


Project Status for June 5, 2008

ESH Civil Ready for Discharge	M	F
Less than 15 days	1	1
15 to 30 days	4	1
31 to 45 days	2	0
More than 45 days	26	31



Total Acute Average Daily Census

Number of Acute Month-to-Date Bed-Days Used Exceeding Expected Pre-Purchased Amount (Estimated Per Diem)